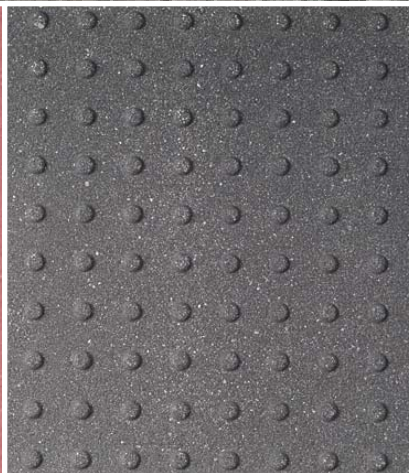
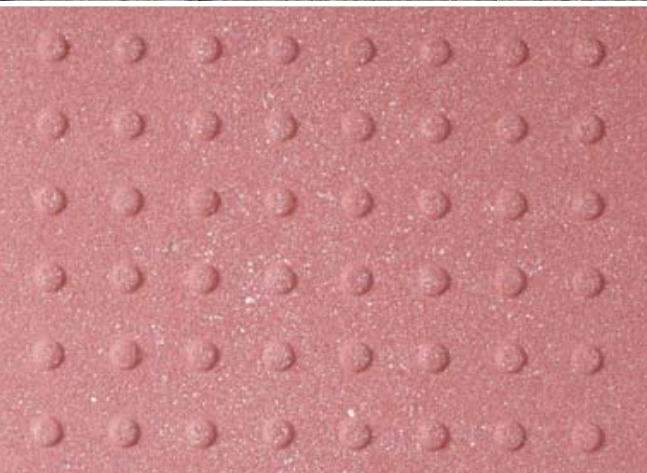


hanover[®] architectural products



detectable warning[®] paver

2 detectable warning[®] paver



Above and Below Photos: Sunset Hills Tower, Reston, VA; Architect: Weihe Design Group, PLLC, Washington, DC; Size & Color: Detectable Warning[®] Pavers 11 3/4" x 11 3/4" x 2", Quarry Red; Finish: Tudor[®]

In response to the American Disabilities Act, Hanover[®] has been working with various government agencies and municipalities to design and provide a paver which would aid the partially sighted and blind pedestrian. The top surface has non-slip properties and raised truncated domes. These are readily detectable under foot, as well as by cane.



Persons with visual impairments depend upon environmental cues of potential hazards — ambient sounds and physical elements that can be sensed by a cane or texture changes underfoot. Any pedestrian area requiring the use of a detectable warning surface can utilize the Detectable Warning[®] Paver. The distinctively textured walking surface can help to warn pedestrians of an impending hazard on the route ahead.

Manufactured in accordance with the requirements set forth in the American Disabilities Act (ADA), Hanover's Detectable Warning[®] Paver is fabricated with a non-slip texture applied to the surface of the paver. Projects will benefit from its ability to withstand snow removal and freeze thaw conditions. Typical installations include railway platforms, handicap ramps and curb and grade changes. The Detectable Warning[®] Paver is manufactured in several sizes to suit design requirements and conform to the ADA Code.

unit sizes	stocked colors
11 3/4" x 11 3/4" x 2" (297mm x 297mm x 51mm)	Red 15
	Charcoal
23 1/2" x 23 1/2" x 2" (597mm x 597mm x 51mm)	Yellow

Please Note: Other sizes and colors are available upon request when quantities permit. Contact a Hanover[®] Representative for more information.

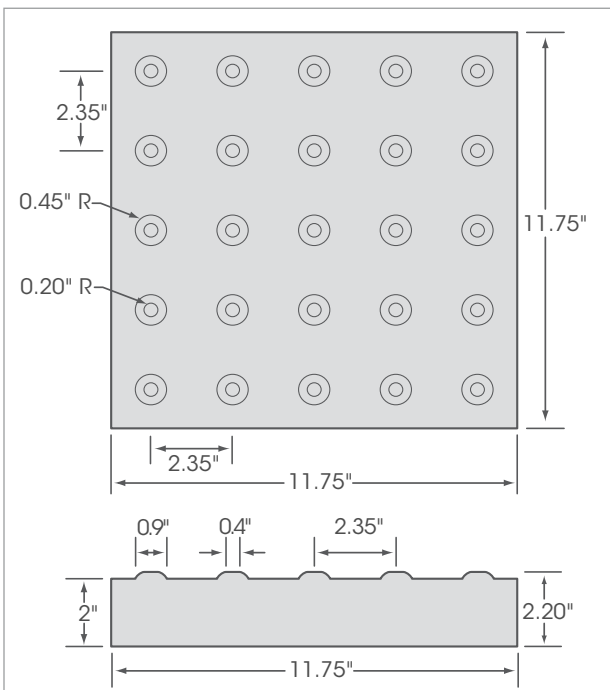


Since July 26, 2001 the suspension on the use of detectable warnings has been lifted, and the FHWA is obligated to enforce the requirements. Therefore state and local governments are required to apply minimum design standards. The original design standard (minimum) for truncated domes is found in ADAAG (4.29.2), but new design recommendations for the dimension and placement of the domes on curbs have been made. Both FHWA and the U.S. Access Board are encouraging the use of the new aligned dome design.

Right and Below Photos: Bangor Waterfront Park, Bangor, ME
 Landscape Architects: Carol R. Johnson Associates, Boston, MA
 Engineer: Wright Pierce, Topsham, ME
 Size & Color: Detectable Warning® Pavers 11 3/4" x 11 3/4" x 2 3/8", Limestone Gray
 Finish: Tudor®



Above Photo: InterContinental Hotel, Buckhead, GA
 Owner: InterContinental Hotels Group, Atlanta, GA
 Size & Color: Detectable Warning® Pavers 11 3/4" x 11 3/4" x 2 3/8", Charcoal
 Finish: Tudor®



Please Note: The standard thickness of the paver does not include the height of the dome. A paver which is ordered at a 2" thickness will actually measure 2.20" from the bottom of the paver to the top of the dome.

hanover® meets new
 ADA Aligned Dome
 format requirements.

detectable warning[®] paver stocked colors

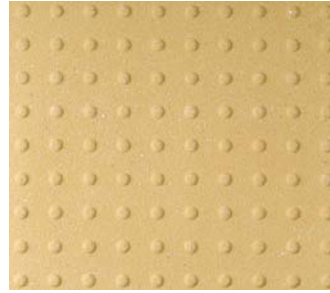
Detectable Warning[®] Pavers are stocked in the three colors shown below. Other colors are available on special request when quantities permit.



Charcoal



Red 15



Yellow (#M1517)

Product Installation: Each project and site conditions are unique. It is important to contact a Hanover[®] representative for product details and installation guidelines. An architect, landscape architect, and/or structural engineer should be consulted to develop a specification suited for the individual project. • Neither this catalog, nor any of the individual product catalogs from Hanover[®] Architectural Products, is intended to be a design manual. The projects pictured and the installation suggestions given in this catalog are only illustrations of Hanover[®] products. Each application and specification for installation should have the attention of an architect, landscape architect, and/or structural engineer. • As product use and site conditions are not within our control, Hanover[®] does not guarantee results from use of such products or other information herein: no warranty, express or implied is given. As government regulations and use conditions may change, it is the Buyers responsibility to determine the appropriateness of these products for the specific end uses.

Please Note: The color photos shown in this catalog were prepared with great concern for accuracy. However, it is suggested that actual samples be requested before specifying. Due to the natural variance of the raw materials used, products can be expected to differ slightly from sample to actual product. It is recommended that the products be cleaned after the installation is finished. Please contact our representatives for product suggestions.

Contact us for product details and information. We invite you to call us at 800-426-4242 to discuss your project, visit our web site www.hanoverpavers.com to download current catalogs and more detailed product information, or request our complete product brochures and samples.

©1971-2006 Hanover[®] Architectural Products

Cover Photos: Arizona State University Foundation Building, Tempe, AZ; Owner: Arizona State University Foundation; Architect: Architekton | Gould Evans; Landscape Architect: Urban Earth Design, LLC, Phoenix, AZ; Project Developer & Manager: Lincoln Property Company, Phoenix, AZ
Size & Color: Detectable Warning[®] Pavers 11 3/4" x 11 3/4" x 2", Charcoal; Finish: Tudor[®]



Where Concrete and Imagination Meet

240 Bender Road, Hanover, PA 17331
717.637.0500 fax 717.637.7145
www.hanoverpavers.com

AMERICAN OWNED



AMERICAN MADE